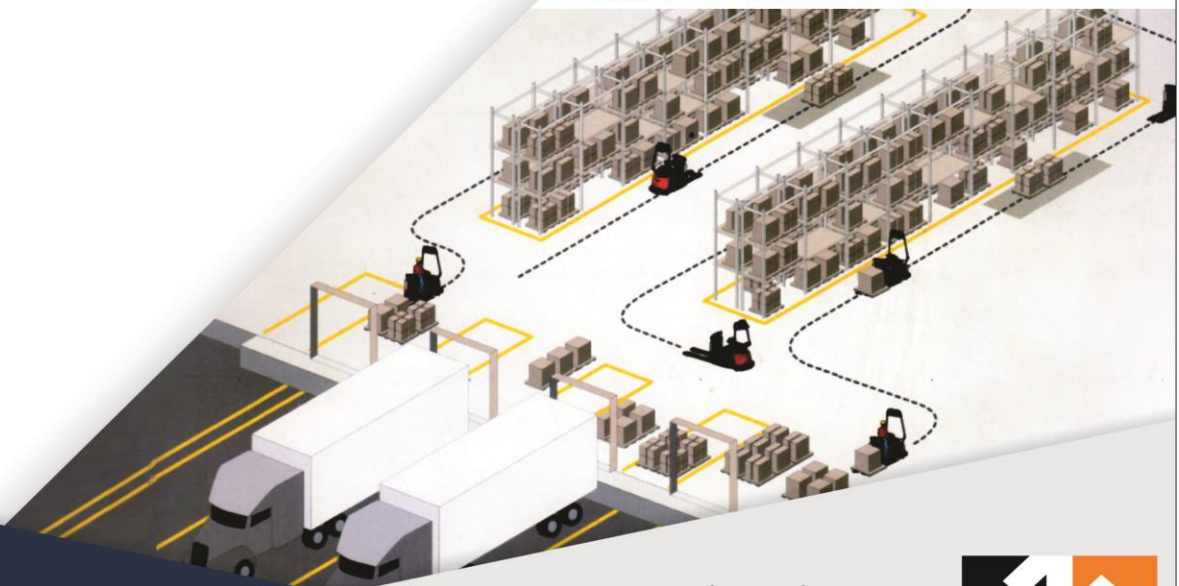
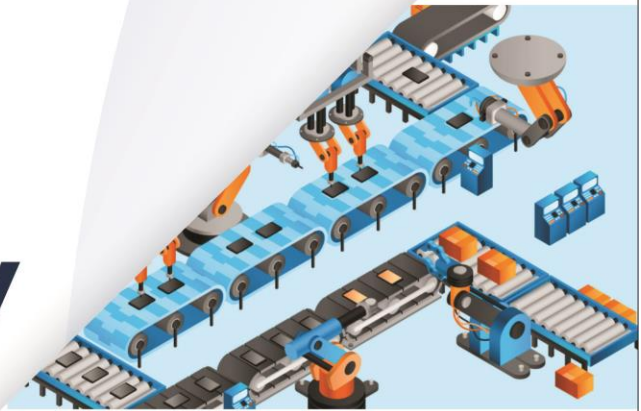




**NIKAM**  
INDUSTRIES

TransPort Your Goods

**Safely**  
**and**  
**Quickly**



🌐 [www.nikamindustries.com](http://www.nikamindustries.com)



# Our Racking System

We'll Meet Your Storage Needs

## Racking System



### Slotted Angle Rack

Description :

Slotted Angle Racking is a system of reusable metal strips used to construct shelving, frames, work benches, equipment stands and other structures. The name derives, first, from the use of elongated slots punched into the metal at uniform intervals to enable assembly of structures fixed with nuts and bolts, and second, from the longitudinal folding of the metal strips to form a right angle.



### Pallet Racking

Description :

1. Durable & precision engineered
2. having smooth edges & efficient storage capacity
3. Direct access to every pallet
4. Pallet can be removed without moving others
5. make stock control easy.
6. adaptable for any size
7. offers high levels of storage density



### Cantilever Racking

Description :

Components -

1. upright
2. beams
3. Bracings
4. frame protector
5. pallet

## Our Racking System

For your Maximum Storage  
in Minimum Space

### Compactor Rack



Features -

1. Anti tilt & cost effective
2. central locking & safe locking
3. accidental movement is prevented
4. powder/epoxy coated
5. adjustable shelves
6. space saving
7. customised design
8. heavy duty durable racks
9. manual & mechanical systems both are provided

### Gravity flow rack

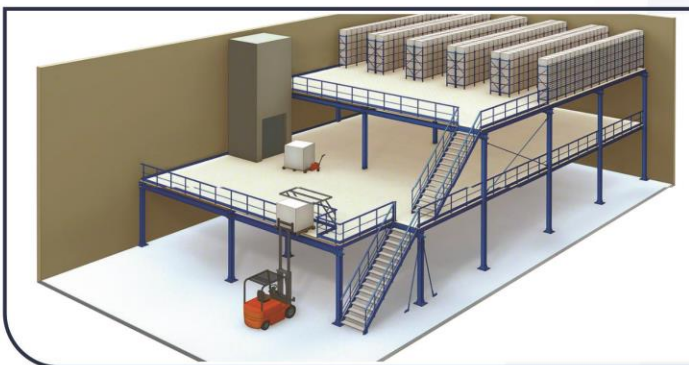


Features:

low racking systems consist of two main components: framework (Vertical frames, Shelf Frames, Sway Braces) and roller tracks.

1. unique flow design that uses gravity to roll cartons to front for easy access.
2. Load inventory and ease stock picking by loading cartons from the back to ensure first in is first out stock rotation.
3. Cartons are transported using roller tracks that are made with U-shaped galvanized steel channels ...

### Mazznine Floor



Features:

1. a stable new floor to hold additional storage
2. enables maximise the height within the warehouse
3. reduces cost of construction by allowing efficient use of space
4. can be easily enlarged, modified or moved
5. two tier wide space racks
6. gives additional space without adding rateable value
7. no extra cost for heat, lights or air-conditioning

# TransPort Your Goods Safely and Quickly



## Hand Pallet Truck

Sr. No.	Description	Operation	Use	Capacity in Ton's	Max. Lift.	Min. Height	Length	Wheel
1	Hand Pallet Truck	Manual	Pallet Lifting	2.5 / 3 / 5	180 mm	90 mm	1150 / 1800	UHMW
2	Semi - Electrical	Electric	Pallet Lifting	1 / 1.5 / 2.5	400-600 mm	100 mm		PU
3	Battery Operated	Battery	Pallet Lifting					



## Stacker

Sr. No.	Description	Operation	Use	Capacity in Ton's	Max. Lift.	Min. Height	Length	Wheel
1	Manual Stacker	Manual	Pallet Lifting	1 / 1.5 / 2	1050 mm	90 mm	900 mm	UHMW
2	Semi - Electrical	Electric	Pallet Lifting	1 / 1.5 / 2	3000 mm	90 mm	900 mm	UHMW
3	Battery Operated	Battery	Pallet Lifting	1 / 1.5 / 2	3000 mm	90 mm	900 mm	UHMW



## Scissor Lift

Sr. No.	Description	Operation	Use	Capacity in Ton's	Max. Lift. in mtr.	Min. Height	Length In mm	Wheel
1	Manual Scissor	Manual	Loading / Unloading	0.5 / 1	1 / 1.5	-----	900* 600	Castor
2	Pit Mounted	Electric	Loading / Unloading	1 to 5	Customize	-----	Custom	NA
3	Movable	Electric	Loading / Unloading	1 to 5	Customize	-----		UHMW

## Our Lifting & Conveyor System

Lifting Easily & Move Quickly Your Goods

### Goods Lift



Sr. No.	Description	Operation	Use	Capacity in Ton's	Max. Lift. In mtrs.	Case / Trolley
1	Four Channel	Hydraulic / Electric	Loading / Unloading	Up to 5	Up to 20	Custom
2	Two Channel	Hydraulic	Loading / Unloading	Up to 1	Up to 10	Custom

### Vegetable Washing Line

Complete customise product  
as per customer requirment



### Roller Conveyor



### Ball Table Conveyor



# Conveyor System

Move Your Goods Easily & Softly

## Chain Conveyor



Our smooth-operating, dependable manual and power conveyor systems have the heaviest gauge track in the industry and are engineered for maximum efficiency. Our specially designed chain pitch can provide 33% more throughput than other overhead chain conveyor systems in the marketplace. What does this mean to you?

It means your distribution center gets faster, your finishing operation wastes less time, and your JIT assembly line operates like clockwork, 24/7.

## Belt Conveyor

Length: 2000mm; Belt Width: 600mm  
 Total Width: 700mm; Frame Depth: 140mm  
 Frame: Full Steel; Bed Type: Slider  
 Support Height: 700mm TOB  
 Belt Type: 2 PLY PVC  
 Tracking Guide: None  
 Drive Type: DRUM  
 Motor: 3 Phases, 415v, 50Hz



## Plastic Pallet - Supreme



## Plastic Bin - Supreme

# TransPort Your Goods Safely and Quickly

## Other Products

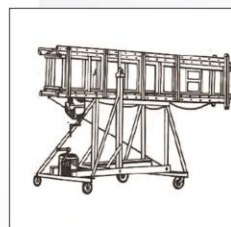
### MS Pallet



### MS & SS Trolleys



### Alluminium Ladder



### Castor wheel



Sr. No.	Description of Castor Wheels	Load Capacity (KGS)
1	Polyurethane Heavy Duty Castor Wheels	250 KGS to 8000 KGS
2	Rubber Heavy Duty Castor Wheels	200 KGS to 1200 KGS
3	Nylon Heavy Duty Castor Wheels	250 KGS to 8000 KGS
4	Steel Heavy Duty Castor Wheels	250 KGS to 1500 KGS
5	Plastic Heavy Duty Castor Wheels	250 KGS to 320 KGS
6	Scaffolding Castor Wheels	200 KGS to 400 KGS
7	Damping Castor Wheels	250 KGS to 420 KGS
8	Forklift and Pallets Castor Wheels	200 KGS to 500 KGS



## Services

1) Sheering & bending job work.      2) Industrial maintenance work.

## Contact

✉ info@nikamindustries.com | sales@nikamindustries.com | purchase@nikamindustries.com  
vishwa\_versatilemkt@rediffmail.com

☎ Mob. No. +91 75 07 665594 | +91 90 49 306390 | +91 82 08 990910

## Address

📍 Office : "Versatile Marketing", Plot No. X 20, Jindal Road, Opp. KSB Pumps, MIDC Malegaon, Sinnar, Nashik-422 113

📍 Factory : " Nikam Industries", Plot No. B 17, Jindal Road, Near TI Cycle, MIDC Malegaon, Sinnar, Nashik-422 113

## Our Clients

**Mahindra**  
Rise.

**U**  
Hindustan Unilever Limited

**legrand**

**N**  
Nobel Hygiene

**Mylan**

**General**  
Mills

**Prabhat**  
DAIRY  
Where Goodness Begins

**KSB**

🌐 [www.nikamindustries.com](http://www.nikamindustries.com)

